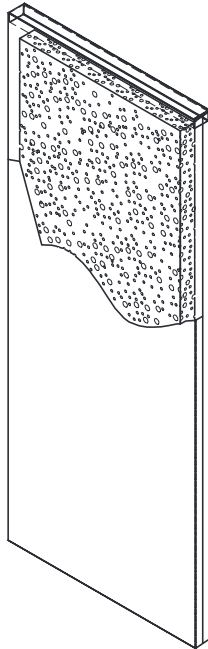


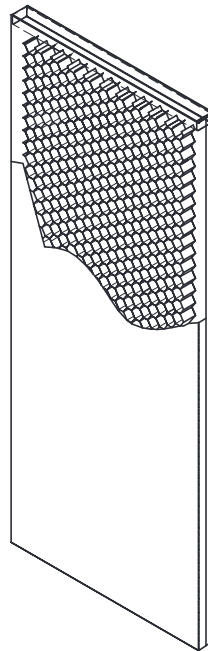


CORES

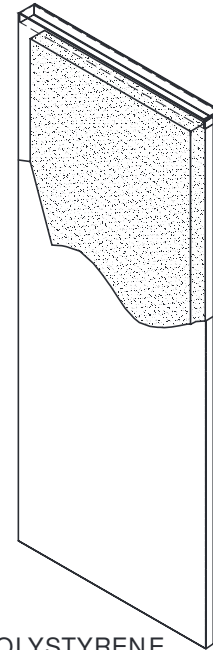


POLYURETHANE

$$\frac{U-0.10}{R-9.72}$$

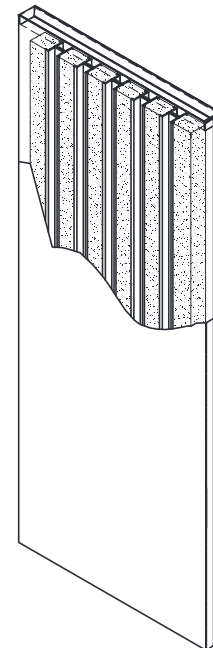


HONEYCOMB



POLYSTYRENE

$$\frac{U-0.15}{R-6.73}$$



STEEL STIFFENED*

$$\frac{U-0.12}{R-8.33}$$

NOTE: Lead lined core also available.

U and R values shown are those of the core material.

* We recommend fastening the stiffeners with our label approved epoxy to avoid spotweld marks.